

Duplex Type A 1-36
Room Schedule

| DP A-2 | |
|--------|------|
| Name | Area |

01_First Floor Level

| | |
|------------------|----------------------|
| WC | 2.18 m ² |
| Utility | 3.37 m ² |
| Living | 23.51 m ² |
| Kitchen / Dining | 16.11 m ² |
| Hallway | 16.75 m ² |
| Balcony | 21.63 m ² |

02_Second Floor Level

| | |
|---------------------------|----------------------|
| Bedroom 3 | 7.58 m ² |
| Bedroom 1 | 15.26 m ² |
| Store | 2.89 m ² |
| Bathroom | 4.67 m ² |
| En-Suite | 3.55 m ² |
| Bedroom 2 | 12.37 m ² |
| Landing | 14.68 m ² |
| Aggregate Living Area | 39.62m2 |
| Ground Floor GIFA | 63.67m2 |
| Aggregate Bed Area | 35.21m2 |
| First Floor GIFA | 63.67m2 |
| Attic Storage | 0m2 |
| Total Storage | 6.26m2 |
| Total Floor Area = | 127.34m2 |

DP A-1

| Name | Area |
|------|------|
|------|------|

01_First Floor Level

| | |
|------------------|----------------------|
| Living | 24.26 m ² |
| Kitchen / Dining | 18.66 m ² |
| WC | 2.18 m ² |
| Utility | 1.88 m ² |
| Hallway | 16.70 m ² |
| Balcony | 21.85 m ² |

02_Second Floor Level

| | |
|---------------------------|----------------------|
| Bedroom 1 | 16.06 m ² |
| Bedroom 3 | 7.58 m ² |
| En-Suite | 3.55 m ² |
| Bathroom | 5.10 m ² |
| Store | 2.89 m ² |
| Bedroom 2 | 12.99 m ² |
| Landing | 14.62 m ² |
| Aggregate Living Area | 42.92m2 |
| Ground Floor GIFA | 65.5m2 |
| Aggregate Bed Area | 36.63m2 |
| First Floor GIFA | 65.5m2 |
| Attic Storage | 2m2 |
| Total Storage | 6.77m2 |
| Total Floor Area = | 131m2 |

AP/DP A-2

| Name | Area |
|------|------|
|------|------|

00_Ground Floor Level

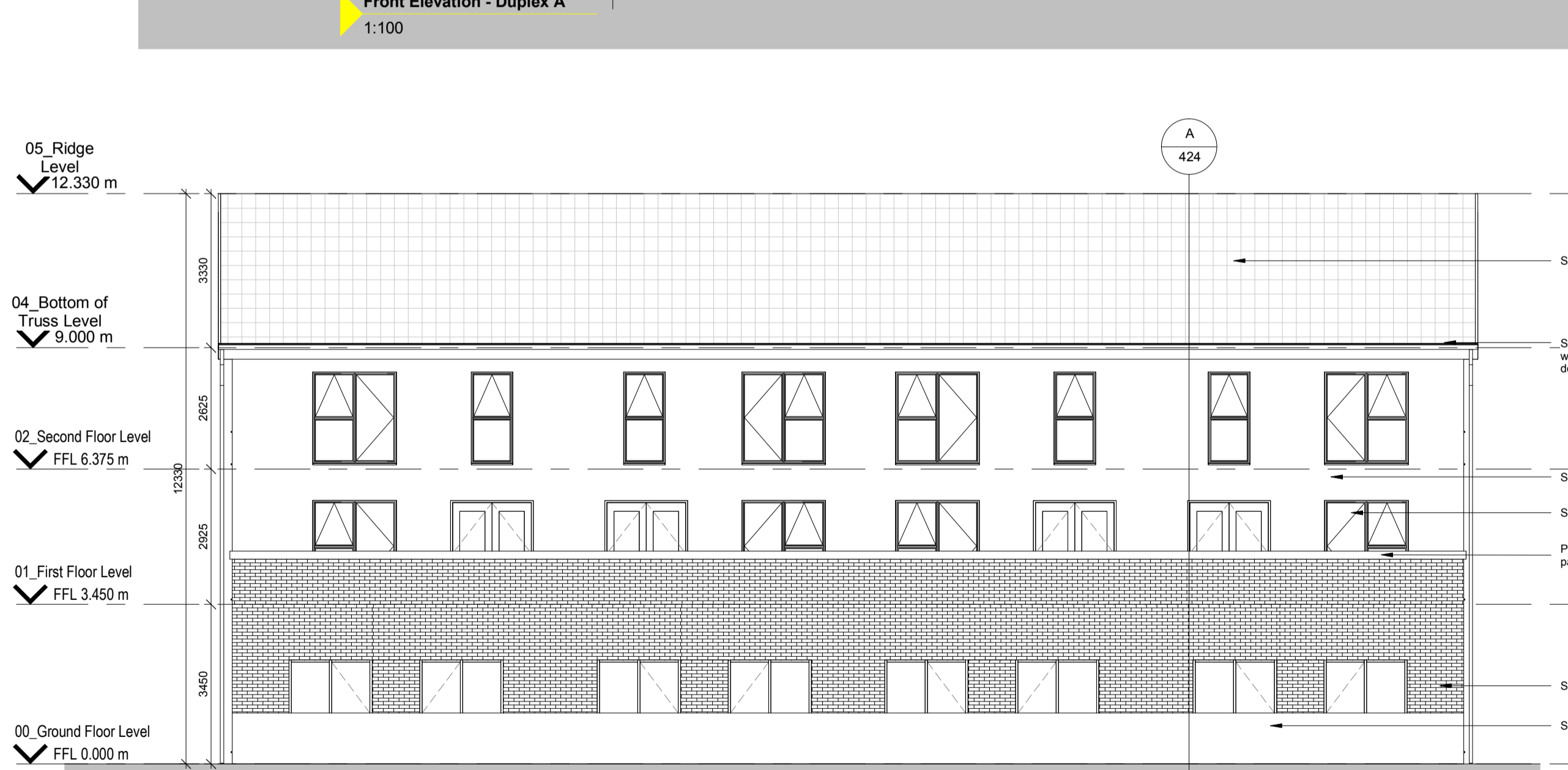
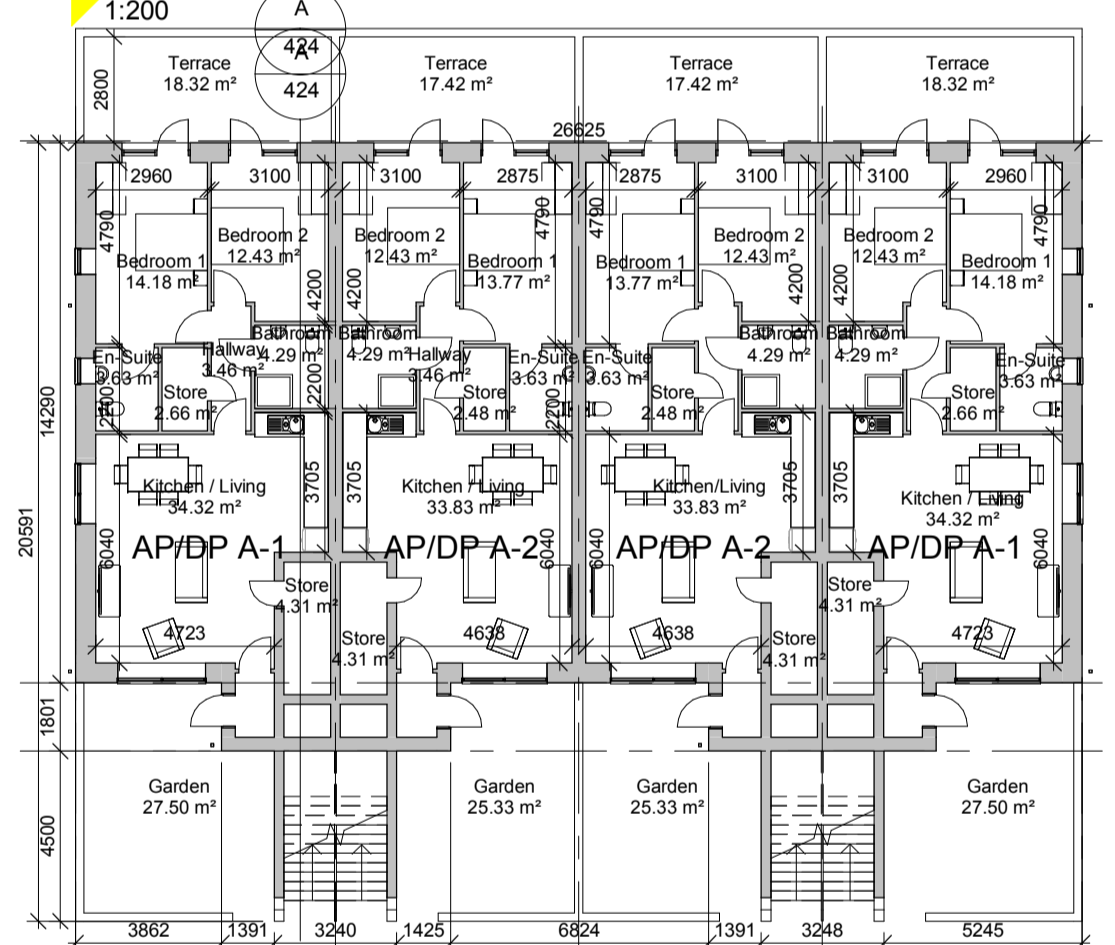
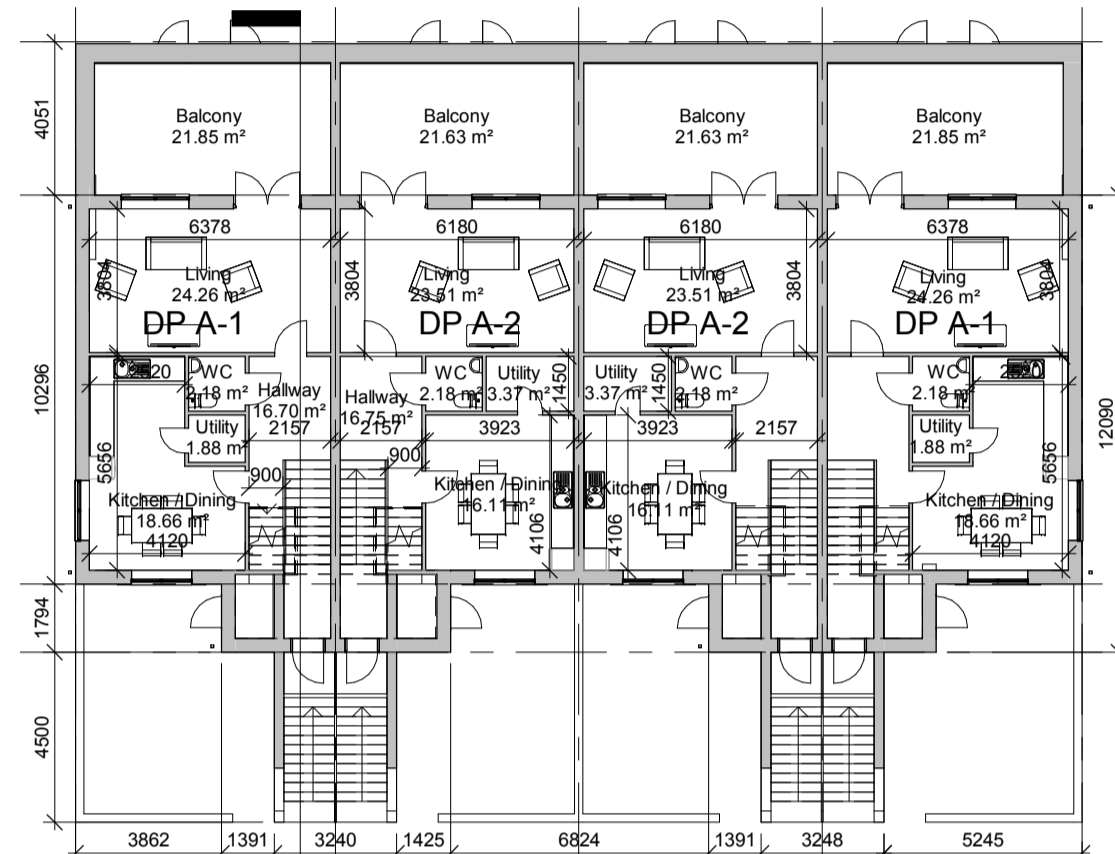
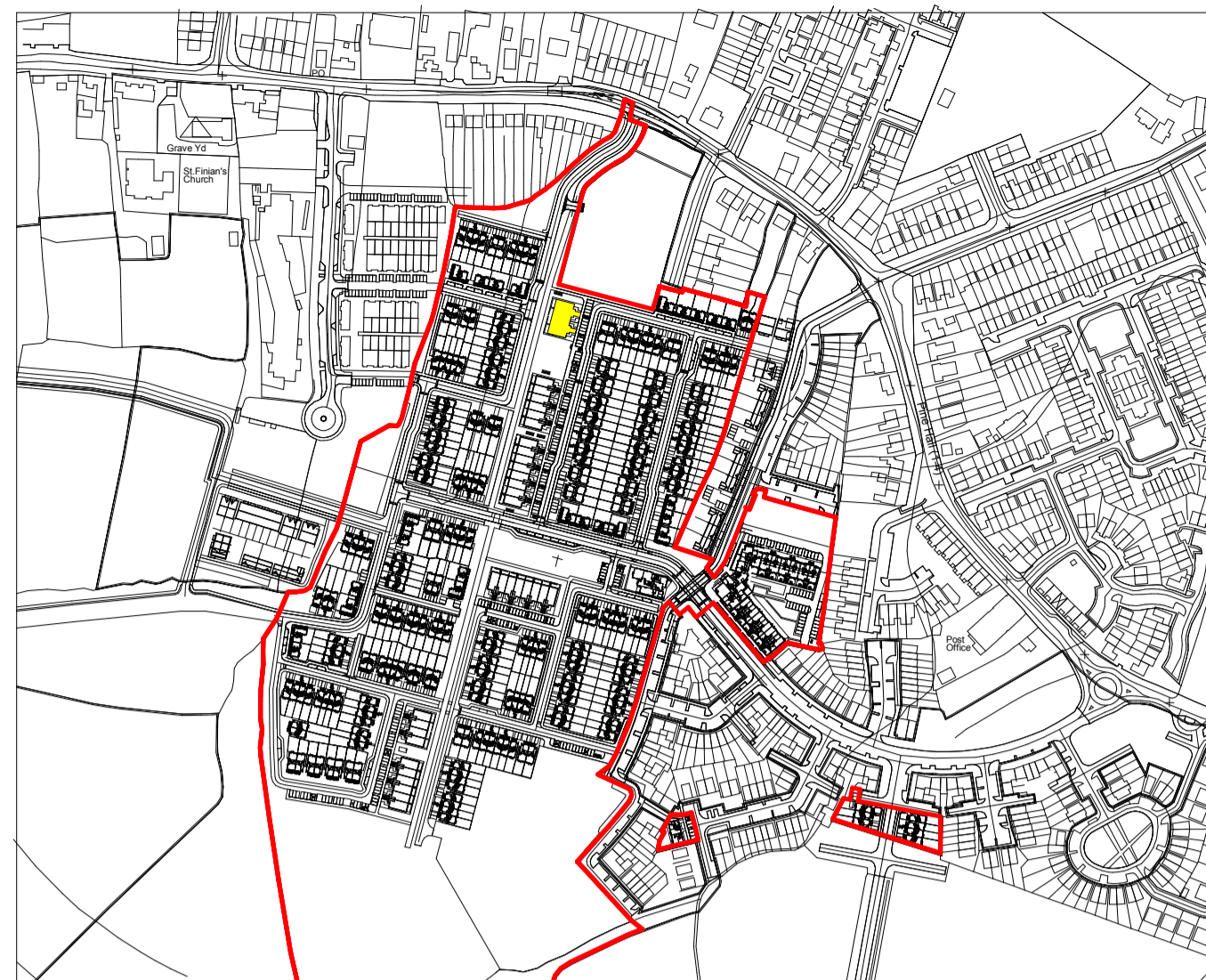
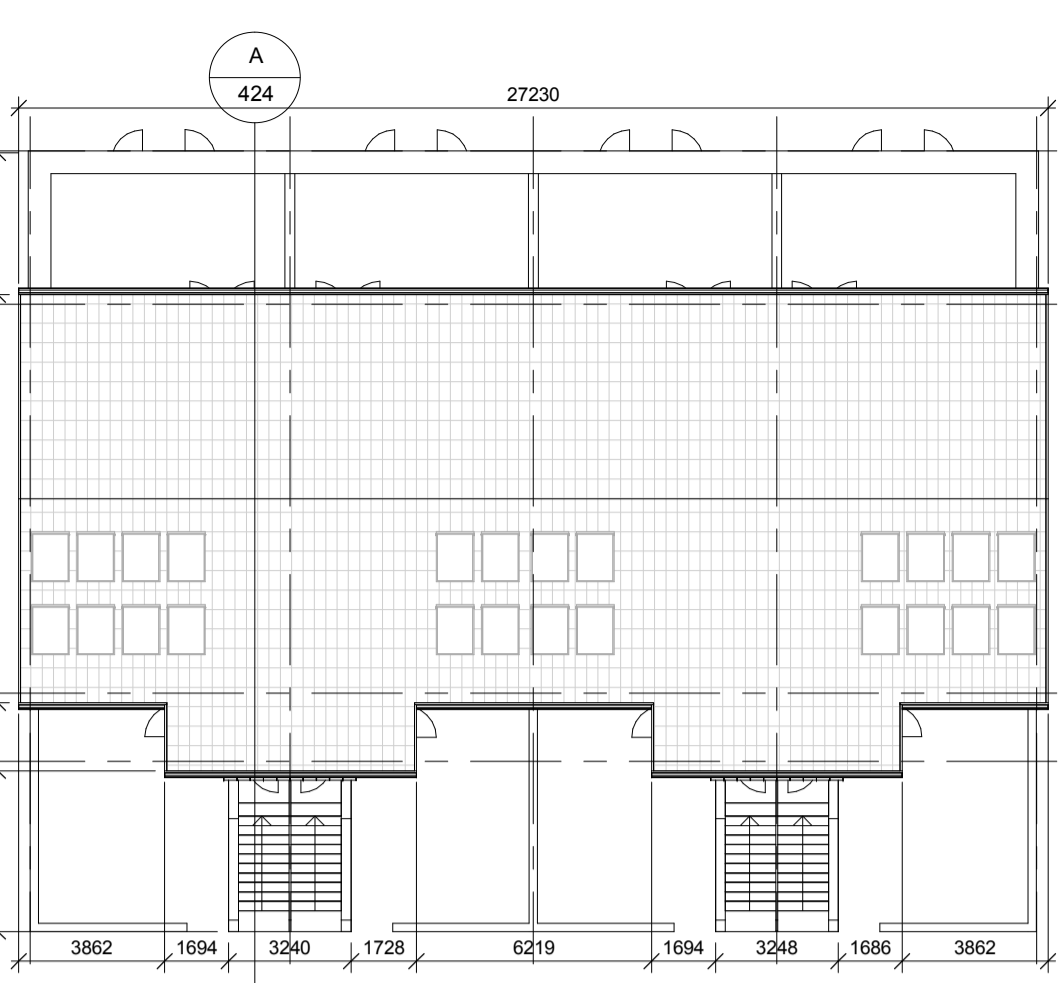
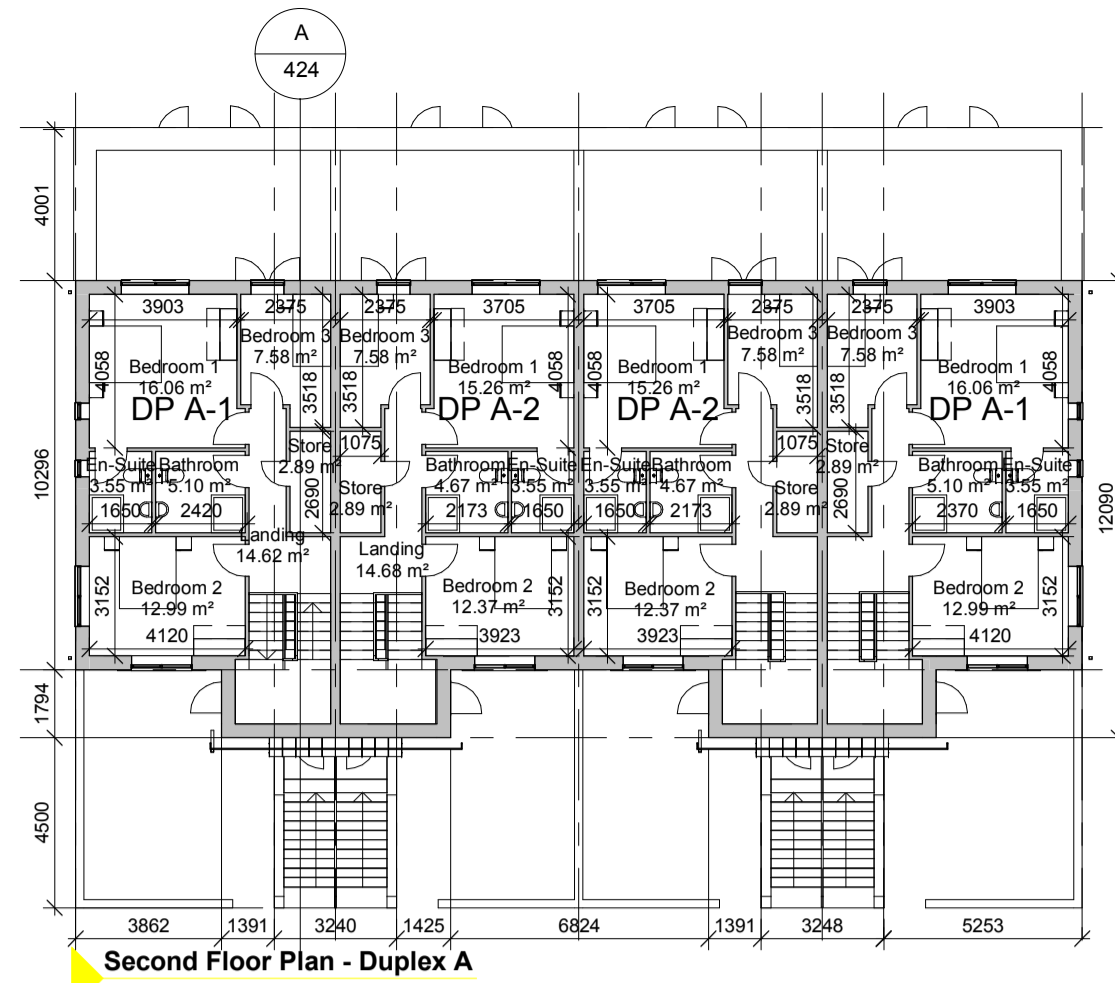
| | |
|---------------------------|----------------------|
| Bedroom 2 | 12.43 m ² |
| Bedroom 1 | 13.77 m ² |
| Bathroom | 4.29 m ² |
| Store | 2.48 m ² |
| En-Suite | 3.63 m ² |
| Kitchen / Living | 33.83 m ² |
| Store | 4.31 m ² |
| Hallway | 3.46 m ² |
| Garden | 25.33 m ² |
| Terrace | 17.42 m ² |
| Aggregate Living Area | 33.83m2 |
| Aggregate Bed Area | 26.2m2 |
| Total Storage | 6.79m2 |
| Total Floor Area = | 83.84m2 |

AP/DP A-1

| Name | Area |
|------|------|
|------|------|

00_Ground Floor Level

| | |
|---------------------------|----------------------|
| Bedroom 2 | 12.43 m ² |
| Bedroom 1 | 14.18 m ² |
| Kitchen / Living | 34.32 m ² |
| En-Suite | 3.63 m ² |
| Store | 2.66 m ² |
| Bathroom | 4.29 m ² |
| Store | 4.31 m ² |
| Hallway | 3.46 m ² |
| Garden | 27.50 m ² |
| Terrace | 18.32 m ² |
| Aggregate Living Area | 34.32m2 |
| Aggregate Bed Area | 26.61m2 |
| Total Storage | 6.97m2 |
| Total Floor Area = | 84.9m2 |



NOTES / LEGEND

Key Plan:

| Rev: | Date: | Description: | By: |
|------|------------|----------------|------|
| 1 | 01/09/2019 | Planning Issue | MOLA |

Drawing Status: Planning Application

Reply Address: 2 Donnybrook Road, Telephone +353 1 218 3900, Donnybrook, Dublin 4, Ireland, www.molaarchitecture.com

MOLA
ARCHITECTS ■ PLANNERS ■ URBAN DESIGNERS ■

Client: Cairn Homes Properties Ltd.
Project: Newcastle South
Drawing: Duplex A - Part V
Date: 01/09/2019 Scale: As indicated Drawn By: EC Approved By: NN Int. Job No: 18001
Project No: NCS18- MOLA-00- ZZ- DR- A- XX 424 A 1
© COPYRIGHT This drawing or design may not be reproduced without permission